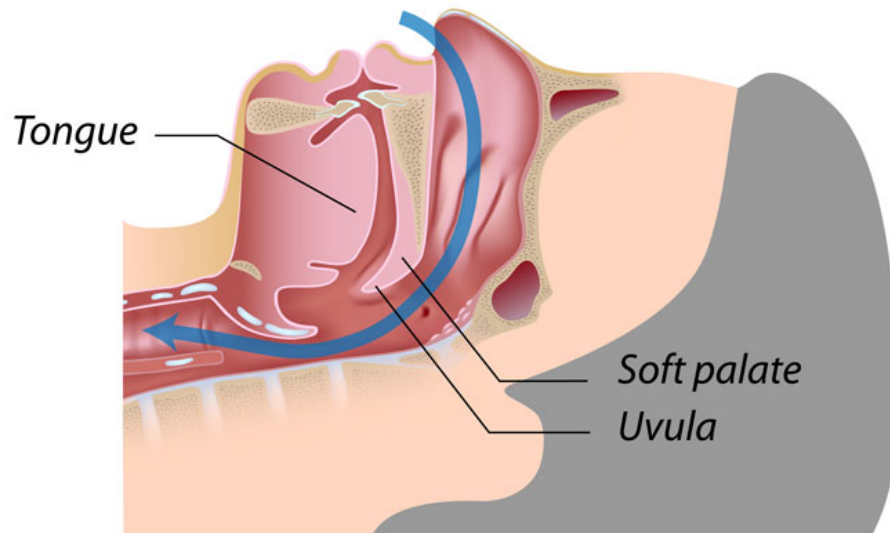


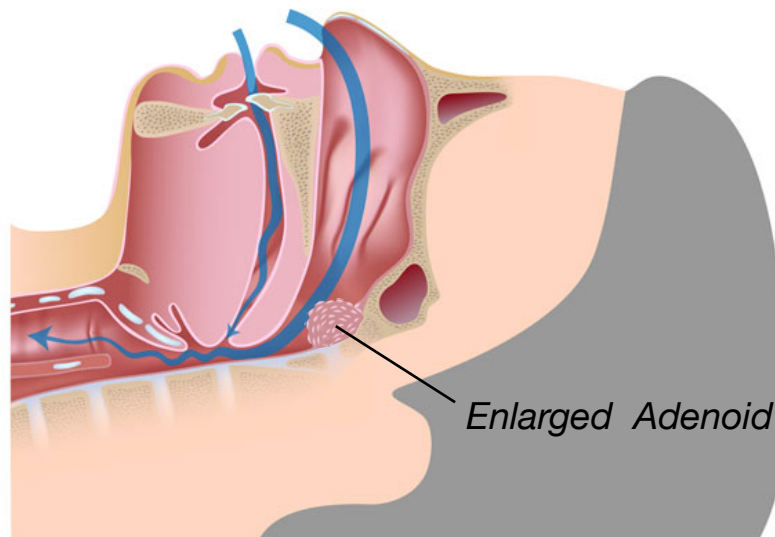
Obstructive Sleep-Disordered Breathing (SDB)

SDB is a syndrome of upper airway dysfunction during sleep that is characterized by snoring and/or increased respiratory effort secondary to greater upper airway resistance and pharyngeal collapsibility.

Normal breathing



Snoring - Partial obstruction of the airway



Obstructive Sleep Apnea (OSA)

OSA - Complete obstruction of the airway

